

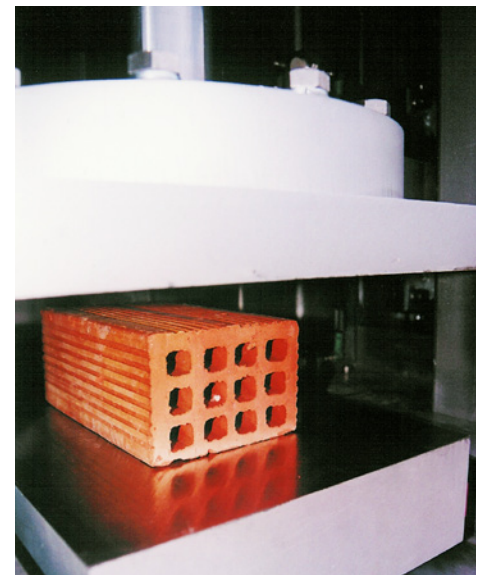
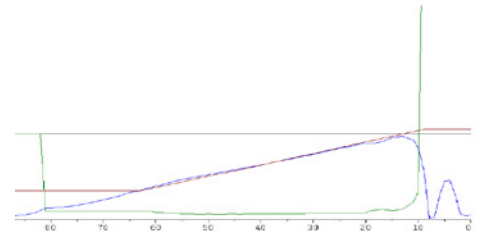
Compression Test Machine for Masonry Units Complying with EN772.01



Features

- Fully automated testing procedure
- Complies with EN772.01
- Robust construction
- Minimum deflection of pressing plates
- Top and lower plate hardened, flatened
- Linear guiding system for top plate
- Self aligning lower plate
- Continuous pressure measurement and control
- Touch screen operation
- PLC control
- Operator protection
- Printer communication
- Optional PC communication

Pressure diagram



SPECIFICATIONS

Capacity	340 kN
Maximum clearance (length x width x height)	350 mm x 270 mm x 285 mm
Maximum repeatability of forces as percentage of indicated force	2.0%
Maximum mean error of forces as percentage of indicated force	± 2.0%
Maximum error of zero force as percentage of maximum force of range	± 0.4%
Power	240V 50Hz 1ph

Special requirements can be met upon inquiry.

All aforementioned information are non-binding and are given without guarantee.
Productivity data and dimensioning for specific applications, can only be provided through an inquiry.

P10051.v1.01 KINEMATIK © 2011